

2012 Recreational Boating Statistics



COMDTPUB P16754.26
U.S. Department of Homeland Security
U.S. Coast Guard
Office of Auxiliary and Boating Safety





Table 1 • 2012 EXECUTIVE SUMMARY

TOP FIVE PRIMARY ACCIDENT TYPES						
Accident Rank	Accident Type	Number of Accidents		Number of Deaths	Number of Injuries	
1	Collision with recreational vessel	1010		47	711	
2	Flooding/swamping	509		68	193	
3	Collision with fixed object	475		50	340	
4	Grounding	422		10	244	
5	Skier mishap	387		20	388	
VESSEL TYPES WITH THE TOP CASUALTY NUMBERS						
Casualty Rank	Type of Boat	Drownings	Other Deaths	Total Deaths	Total Injuries	Total Casualties
1	Open motorboat	211	75	286	1556	1842
2	Personal watercraft	23	35	58	721	779
3	Cabin motorboat	35	20	55	269	324
4	Canoe/kayak	83	19	102	134	236
5	Pontoon	30	14	44	114	158
LIFE JACKET WEAR BY TOP FIVE KNOWN CAUSES OF DEATH						
Known Cause of Death Rank	Cause of Death	Number of Deaths	Life Jacket			
			Worn	Not Worn	Unknown if worn	
1	Drowning	459	71	379	9	
2	Trauma	103	35	66	2	
3	Cardiac arrest	29	10	19	0	
4	Hypothermia	11	5	6	0	
5	Carbon monoxide poisoning	2	0	2	0	
TOP TEN KNOWN PRIMARY CONTRIBUTING FACTORS OF ACCIDENTS						
Accident Rank	Contributing Factor	Number of Accidents		Number of Deaths	Number of Injuries	
1	Operator inattention	581		47	359	
2	Operator inexperience	417		51	303	
3	Improper lookout	391		13	278	
4	Machinery failure	346		10	115	
5	Excessive speed	310		31	288	
6	Navigation rules violation	290		13	236	
7	Alcohol use	280		109	227	
8	Force of wave/wake	228		6	204	
9	Weather	221		43	103	
10	Hazardous waters	184		57	92	



Figure 1 PERCENT OF ACCIDENTS THAT ARE FATAL BY MONTH

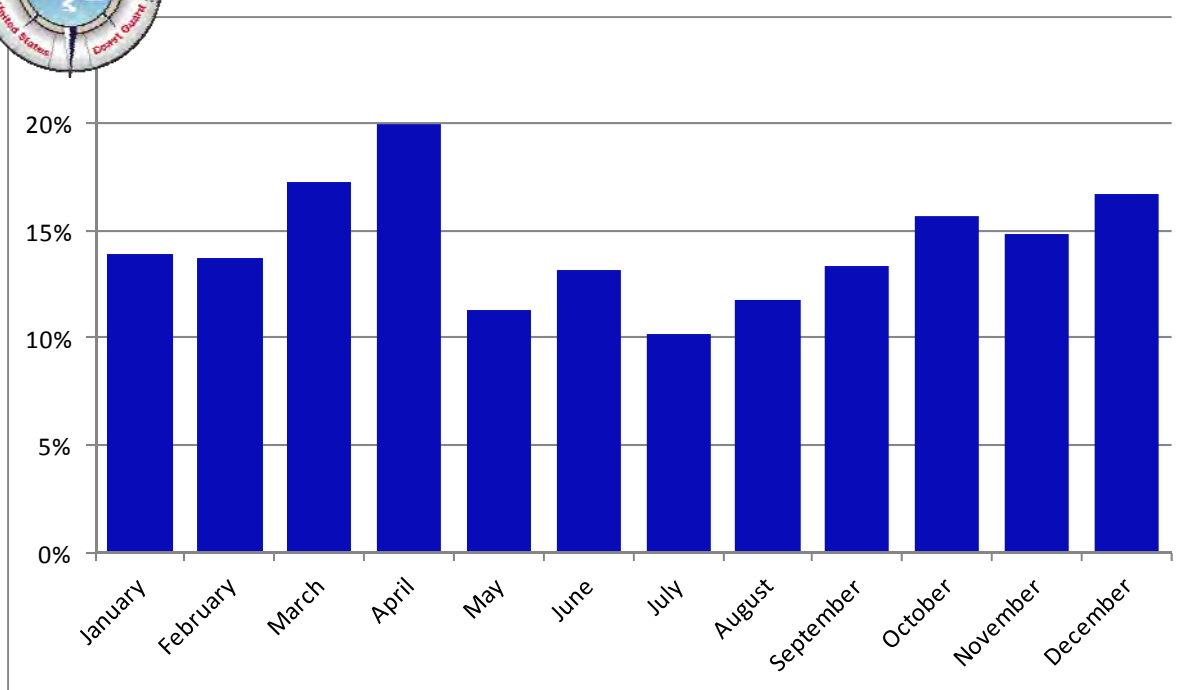


Table 4 • PERCENT OF ACCIDENTS THAT ARE FATAL BY MONTH

Month	Fatal Accidents	Non-Fatal Accidents	Total Accidents	Accidents Resulting in Deaths	Total Deaths
January	12	74	86	14%	13
February	11	69	80	14%	14
March	35	168	203	17%	41
April	49	196	245	20%	57
May	67	526	593	11%	73
June	99	654	753	13%	108
July	110	969	1079	10%	124
August	81	608	689	12%	88
September	53	345	398	13%	62
October	30	161	191	16%	34
November	16	92	108	15%	19
December	15	75	90	17%	18
Total	578	3937	4515	13%	651



Table 5 • PRIMARY CONTRIBUTING FACTOR OF ACCIDENTS & CASUALTIES 2012

		Accidents	Deaths	Injuries
Operation of Vessel 2454 Accidents 288 Deaths 1839 Injuries	Alcohol use	280	109	227
	Drug use	9	6	4
	Excessive speed	310	31	288
	Failure to ventilate	21	0	16
	Improper lookout	391	13	278
	Inadequate onboard navigation lights	19	4	19
	Operator inattention	581	47	359
	Operator inexperience	417	51	303
	Restricted vision	62	5	38
	Navigation rules violation	290	13	236
	Sharp turn	72	8	71
	Starting in gear	2	1	0
Loading of Passengers or Gear 194 Accidents 65 Deaths 119 Injuries	Improper anchoring	44	2	14
	Improper loading	54	23	33
	Overloading	43	21	31
	People on gunwale, bow or transom	53	19	41
Failure of Boat or Boat Equipment 468 Accidents 20 Deaths 147 Injuries	Equipment failure	58	4	16
	Hull failure	64	6	16
	Machinery failure	346	10	115
Environment 705 Accidents 110 Deaths 432 Injuries	Congested waters	41	0	23
	Dam/lock	4	3	2
	Force of wave/wake	228	6	204
	Hazardous waters	184	57	92
	Missing/inadequate navigation aids	27	1	8
	Weather	221	43	103
Miscellaneous 694 Accidents 168 Deaths 463 Injuries	Ignition of fuel or vapor	66	1	50
	Carbon monoxide exposure	7	3	19
	Sudden medical condition	32	28	5
	Other	445	58	347
	Unknown	144	78	42
All Categories Combined		4515	651	3000